



Alexandra Coach House Woodborough Road, Nottingham, NG3 4JA

£125 Per Week



High end student accommodation for 2025/2026.

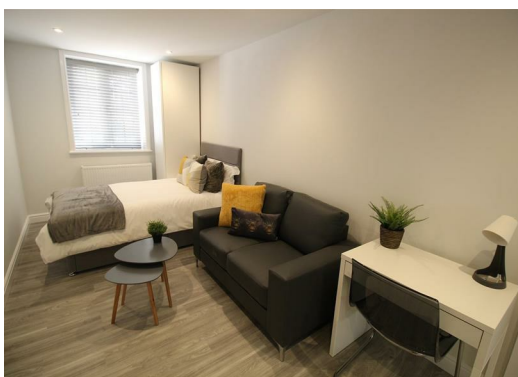
The property consists of 10 self-contained Studio Apartments all finished to an exceptional standard. Heating, electricity, water, TV Licence and 500mb internet included. Council Tax exempt.

All rooms have ensuite shower rooms and their own kitchens, modern decor and furnished throughout. Access to a communal laundry room.

50 week contract.

Ideally located for amenities and public transport. Just 1.1 miles to City Centre.

Call now to arrange your viewing.



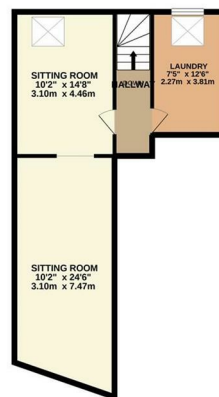
BASEMENT
982 sq.ft. (91.3 sq.m.) approx.



GROUND FLOOR
981 sq.ft. (91.1 sq.m.) approx.



1ST FLOOR
530 sq.ft. (49.2 sq.m.) approx.



TOTAL FLOOR AREA : 2493 sq.ft. (231.6 sq.m.) approx.

Whilst every attempt has been made to ensure the accuracy of the floorplan contained here, measurements of doors, windows, rooms and any other items are approximate and no responsibility is taken for any error, omission or mis-statement. This plan is for illustrative purposes only and should be used as such by any prospective purchaser. The services, systems and appliances shown have not been tested and no guarantee as to their operability or efficiency can be given.
Made with Metropix ©2021

Energy Efficiency Rating		Current	Potential
Very energy efficient - lower running costs			
(92 plus) A			
(81-91) B			
(69-80) C			
(55-68) D			
(39-54) E			
(21-38) F			
(1-20) G			
Not energy efficient - higher running costs			
England & Wales		EU Directive 2002/91/EC	
Environmental Impact (CO₂) Rating			
Very environmentally friendly - lower CO ₂ emissions			
(92 plus) A			
(81-91) B			
(69-80) C			
(55-68) D			
(39-54) E			
(21-38) F			
(1-20) G			
Not environmentally friendly - higher CO ₂ emissions			
England & Wales		EU Directive 2002/91/EC	

These particulars, whilst believed to be accurate are set out as a general outline only for guidance and do not constitute any part of an offer or contract. Intending purchasers should not rely on them as statements of representation of fact, but must satisfy themselves by inspection or otherwise as to their accuracy. No person in this firm's employment has the authority to make or give any representation or warranty in respect of the property.